

**SECTION-A**

A. Choose the correct option:

10 x 1 = 10

1. Bile is a digestive juice made by

- a) stomach    b) liver    c) kidney

2. These cannot be seen with naked eye.

- a) mosquitoes    b) Houseflies    c) microorganisms

3. Muscles of the heart are called \_\_\_\_\_ muscles.

- a) cardiac    b) involuntary    c) voluntary

4. In case of fire we should dial

- a) 101    b) 103    c) 102

5. Without the \_\_\_\_\_ our body would be a heap of organs.

- a) heart    b) skeleton    c) lungs

6. Our body is made up of 70% of

- a) fats    b) water    c) fibre

7. Vitamins and minerals are \_\_\_\_\_ nutrients

- a) protective    b) body building    c) energy giving

8. Water bodies are denoted by \_\_\_\_\_ colour on a map.

- a) yellow    b) blue    c) green

9. Mount Everest lies in the range of

- a) Himachal    b) Himadri    c) Shivalik

10. India is seventh largest country in the world in the terms of

- a) population    b) wealth    c) area

B. Fill in the blanks:

10 x 1 = 10

11. Name the disease: infection of the eye\_\_\_\_\_.



12. \_\_\_\_\_ are the filters of our body.
13. The \_\_\_\_\_ hills are one of the oldest hill ranges.
14. A \_\_\_\_\_ box should be ready in case of an injury.
15. \_\_\_\_\_ is a miniature model of the earth.
16. Body builders use \_\_\_\_\_ to build muscles rapidly.
17. The Himalayas are \_\_\_\_\_ km long.
18. Kangra and Kullu valleys lie in \_\_\_\_\_.
19. \_\_\_\_\_ range lies towards west of Himalayas.
20. Deficiency of \_\_\_\_\_ leads to goitre.

C. Write true or false:

5 X 1 = 5

21. In case of a gas leak, all the doors and windows should be closed. ☐
22. Large intestine is shorter than the small intestine. ☐
23. Brain controls all the actions of our body. ☐
24. Parasite is an organism which lives on another organism. ☐
25. Disease can be prevented by leading a healthy life. ☐

D. Choose the correct answer:

5 X 1 = 5

- a) Both A and R are true and R is the correct explanation of A.
- b) Both A and R are true but R is not the correct explanation of A.
- c) A is true but R is false.
- d) A is false but R is true.

26. **Assertion (A):** The great deccan plateau is a peninsula.

**Reason (R) :** A peninsula is surrounded by water on three sides.

27. **Assertion (A):** We use symbols to represent different things in a map.

**Reason (R) :** Symbols have no importance in maps.

28. **Assertion (A):** Kidneys are the filtering machines of the body.

**Reason (R) :** Kidneys filter waste from the blood.

29. **Assertion (A):** Himalayas act as barriers against enemies for India.

**Reason (R) :** Himalayas are rich in minerals.



30. Assertion (A): We cannot easily detect an LPG leakage.

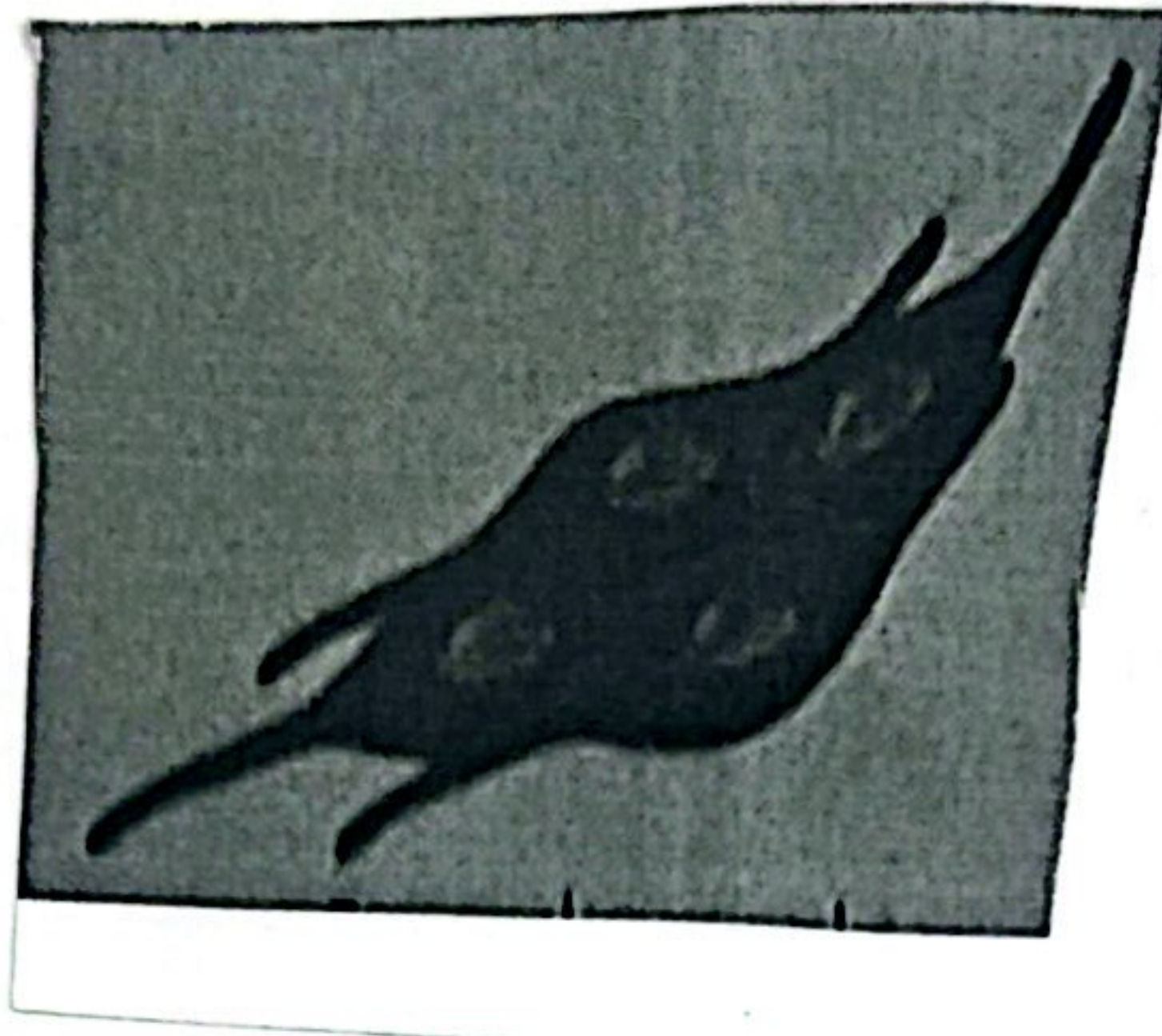
Reason (R) : The LPG has a very distinct smell.

E. Identify the following:

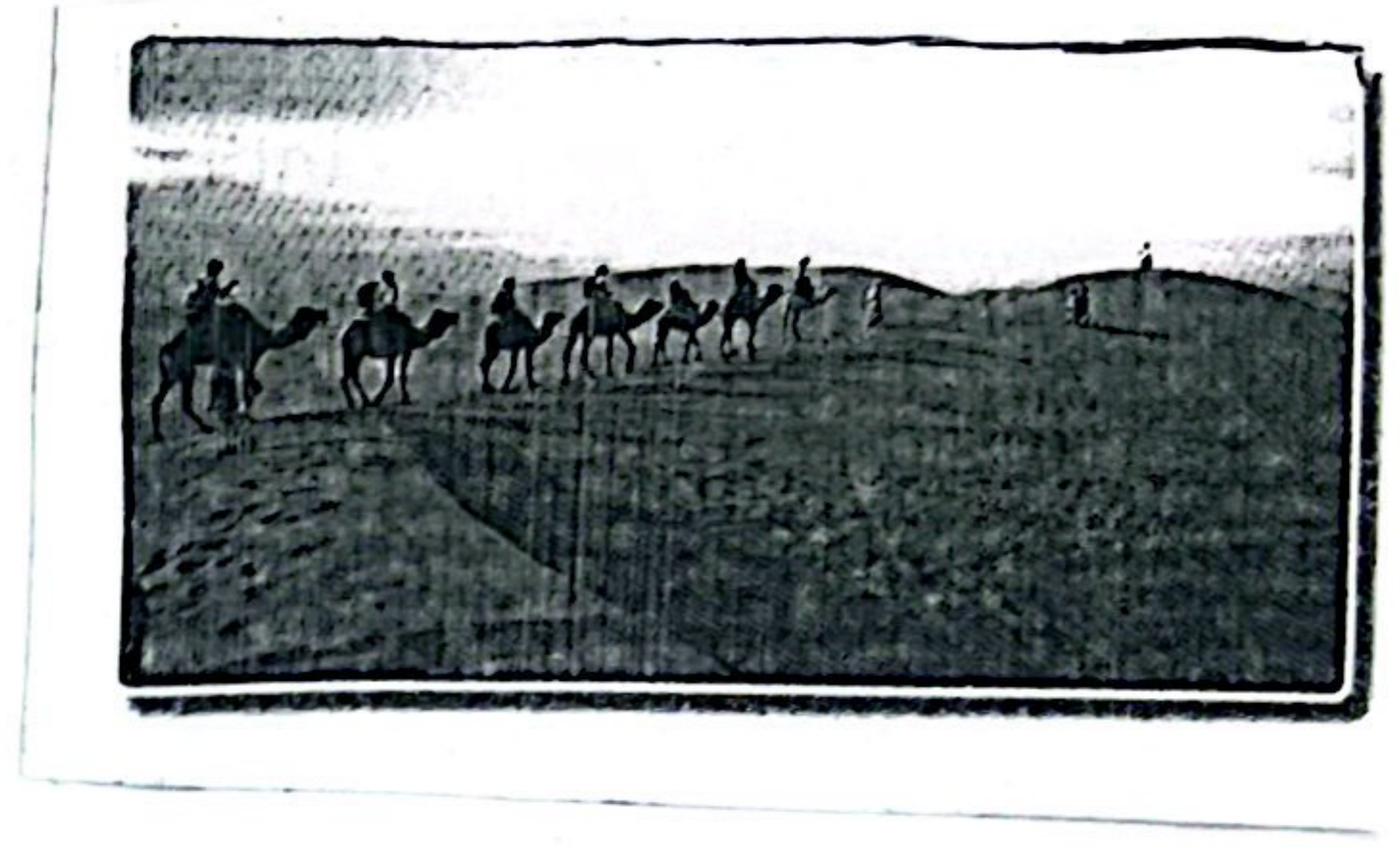
31.



32.



33.



3 x 1 = 3

### SECTION – B

F. Define the following: (ANY THREE)

3 X 2 = 6

34. Deficiency disease

35. Sprain

36. Skeletal system

37. Equator

G. Answer the following short answer questions: ( ANY FOUR)

4 X 2 = 8

38. Name any 2 diseases transmitted by houseflies.

39. How would we cross the road safely?

40. The tar region has less vegetation. Explain.

41. What are limitations of using maps?

42. What is the reason for High population in the Gangetic plains?

43. Match the following:

- |              |                     |
|--------------|---------------------|
| 1. Himachal  | a) Biafo glacier    |
| 2. Shivalik  | b) Gangotri         |
| 3. Karakoram | c) Terrace farming  |
| 4. Himadri   | d) Deciduous forest |

### SECTION – C

H. Answer the following short answer questions: ( ANY THREE)

3 X 3 = 9



44. Differentiate between Bio-degradable and Non – Biodegradable waste.

45. Write about any three salient features of India.

46. Draw a neat labelled diagram of excretory system.

47. Why are colours and symbols used on a map?

48. Write a note on vitamins and their types.

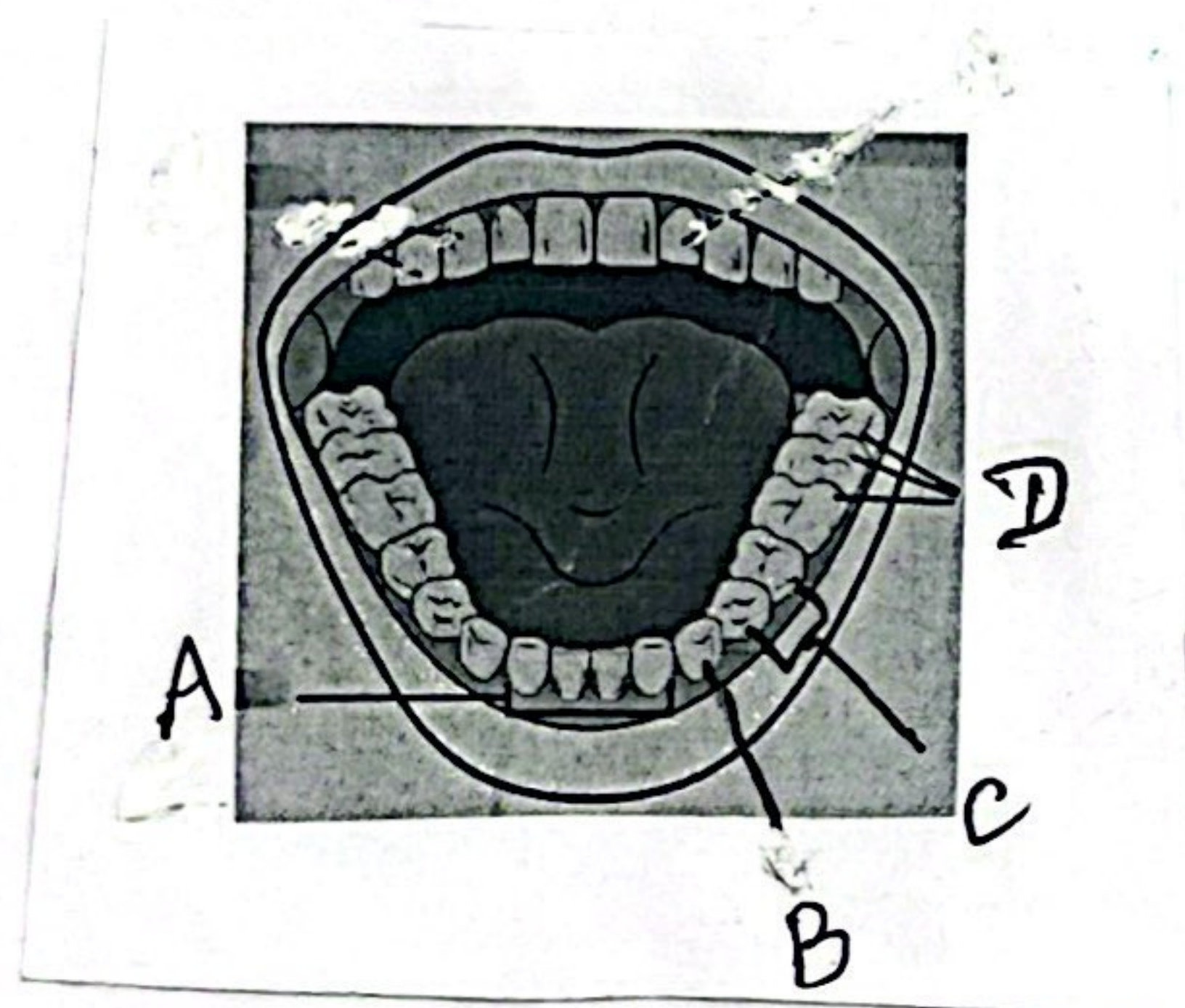
SECTION – D

1 x 4 = 4

I. Label the following any one of the diagram:

49.

a)



b)

